

BLOOD & INFUSION WARMER

QW3



BLOOD & INFUSION WARMER

QW3

FEATURES

Technology of control:

- Microprocessor system provides high precise control, permanent running self-tests and malfunction alarms

No extra disposables:

- Grooved dry heating plate enables to use routine transfusion / infusion tubing

Double locks:

- The magnetic cover and extra clamp to secure the tubing positioning

Accurate temperature monitoring:

- Three sets of independent temperature sensor and numerical display for real-time temperature or set temperature in 0.1°C

Multiple protections for high safety:

- High temperature cut-off, low temperature alarm and sensor fault alarm

Unique high temperature alarm testing function:

- Extra safe in use and easy for maintenance

Wide range of IV tube compatible:

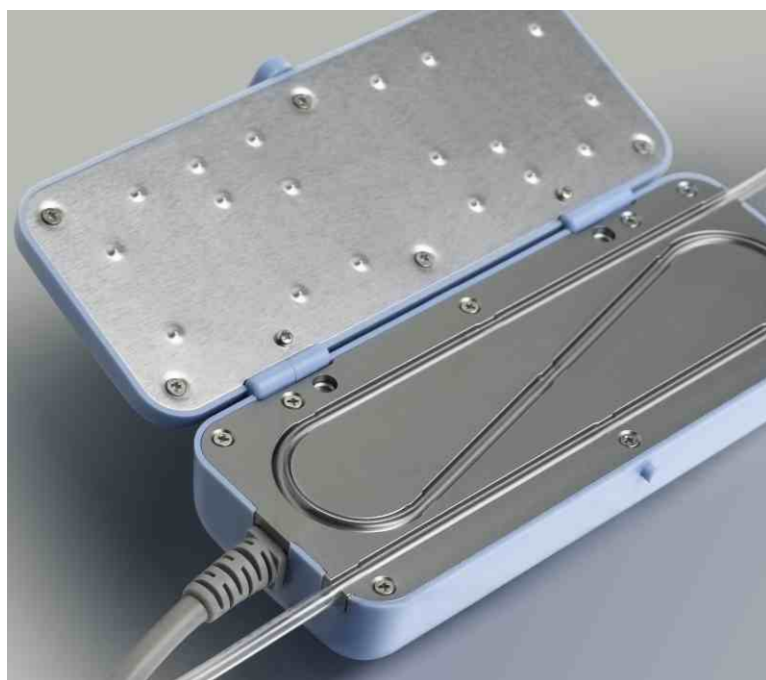
- 3.5-5.0 mm O.D.

Recommended flow rate:

- kvo ~ 16ml/min

Simple operation and quick warming up:

- Insert the tube, set the temperature, warm up from 20°C to 36°C within 45 second and ready to serve the patient



TECHNICAL SPECIFICATIONS

Model:	QW3
Temperature setting:	37°C ~ 42°C
Power supply:	AC230V±10%/50~60Hz
Power consumption:	Max. 80VA
Type of protection against electric shock:	Class I
Degree of protection against electric shock:	Type B
Degree of protection against ingress of liquids:	IPX1
Temperature accuracy:	±1.0°C
Overheat protection:	43°C / 45°C / 48±3°C
Low temperature alarm:	36 °C
Warming up time:	<45sec (20°C - 36°C)
Operating mode:	Continuous
Dimension (W*D*H):	180×75×40mm
Weight:	0.7kg

* Subject to technical modifications without notice

keewell
Medical Technology

Keewell Medical Technology Co.,Ltd.

Xiananyi Industrial Zone, Pingzhou, Nanhai, Foshan,
Guangdong 528251, P.R.China

T.: +86 757 86260855 F.: +86 757 86260100
marketing@keewell.cn www.keewell.cn



Distributor: